



CARTA

Cube Analysis and Rendering Tool for Astronomy

Next-generation image visualization and analysis tool designed for ALMA, VLA, and SKA pathfinders

ASIAA CASA Development Center (ACDC) acknowledges the grant from the National Science and Technology Council for the Taiwan-US Astronomical Facility Collaboration: ALMA & GMT

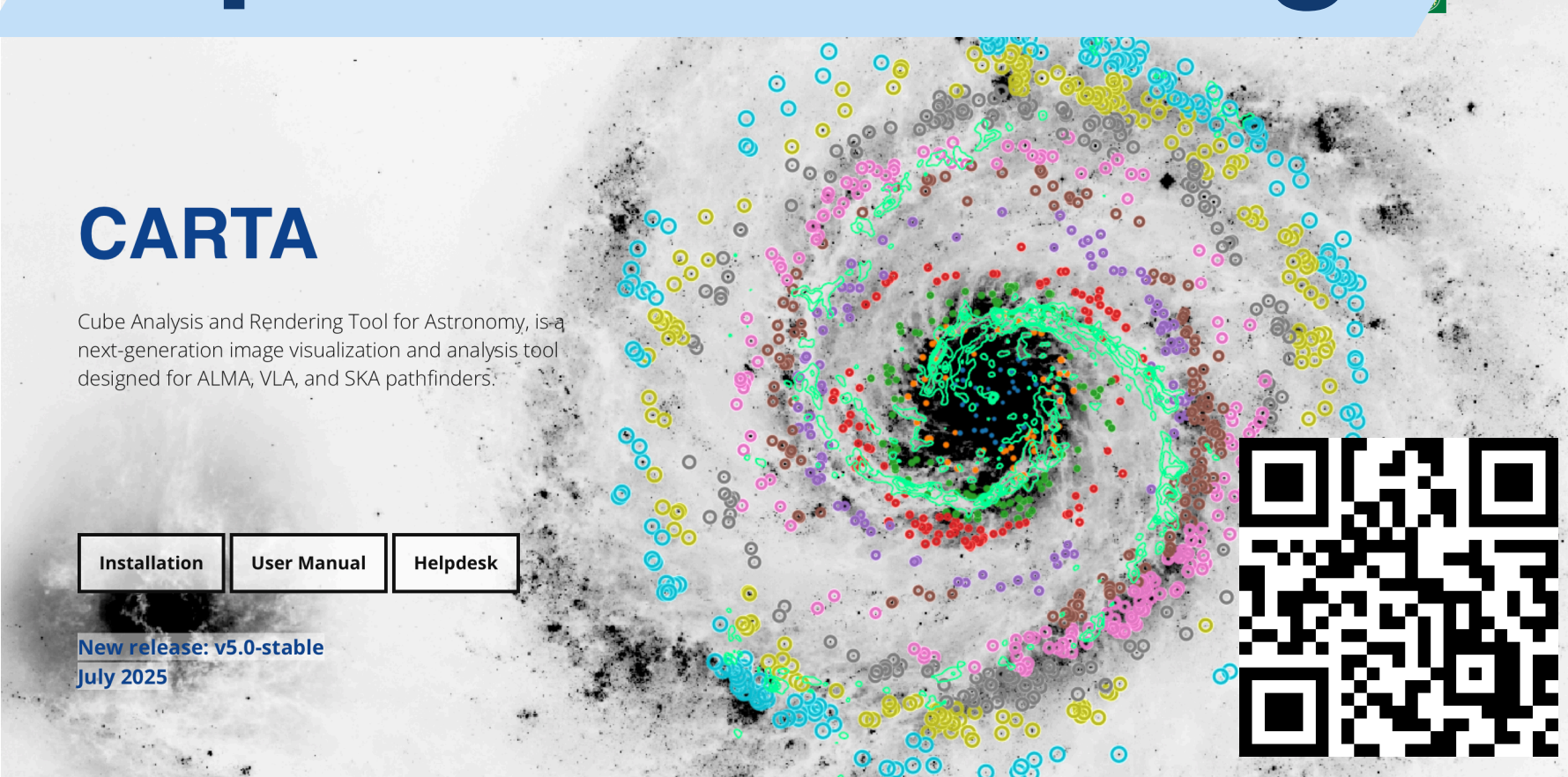
e-Poster



ASIAA	Cheng-Chin Chiang, Kuan-Chou Hou (presenter) , Kuo-Song Wang, Po-Sheng Huang, Zhen-Kai Gao, Chin-Fei Lee		
IDIA	Angus Comrie, Adrianna Pińska, David Aikema, Kechil Kirkham, Michaela van Zyl, Rob Simmonds, Russ Taylor		
NRAO	Pamela Harris, Juergen Ott, John Hibbard, Jeff Kern		
Dept. of Physics, Univ. of Alberta	Erik Rosolowsky	ESO	Felix Stoehr
AusSRC	Jordan Collier, Karen Lee-Waddell		
Former contributors	Shou-Chieh Hsu, Qi Pang, Hengtai Jen, I-Chenn Chen, Darrel Schiebel, Jorge Lopez, Joshua Hoskins, Ryan Raba, Christina Reynolds, Anthony Moraghan, Ming-Yi Lin, Carli Raul-Omar, Tien-Hao Chang, Yu-Hsuan Hwang		

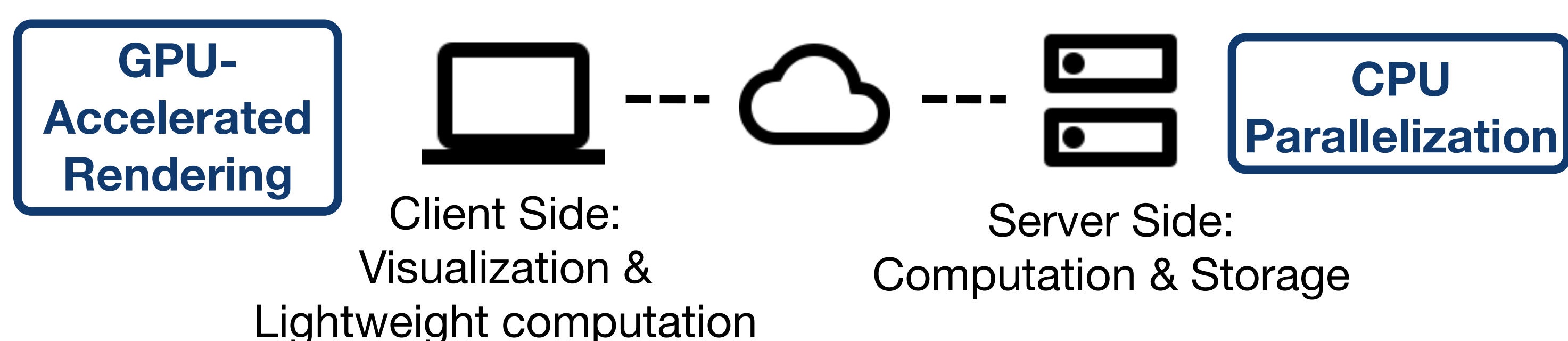


<https://cartavis.org>

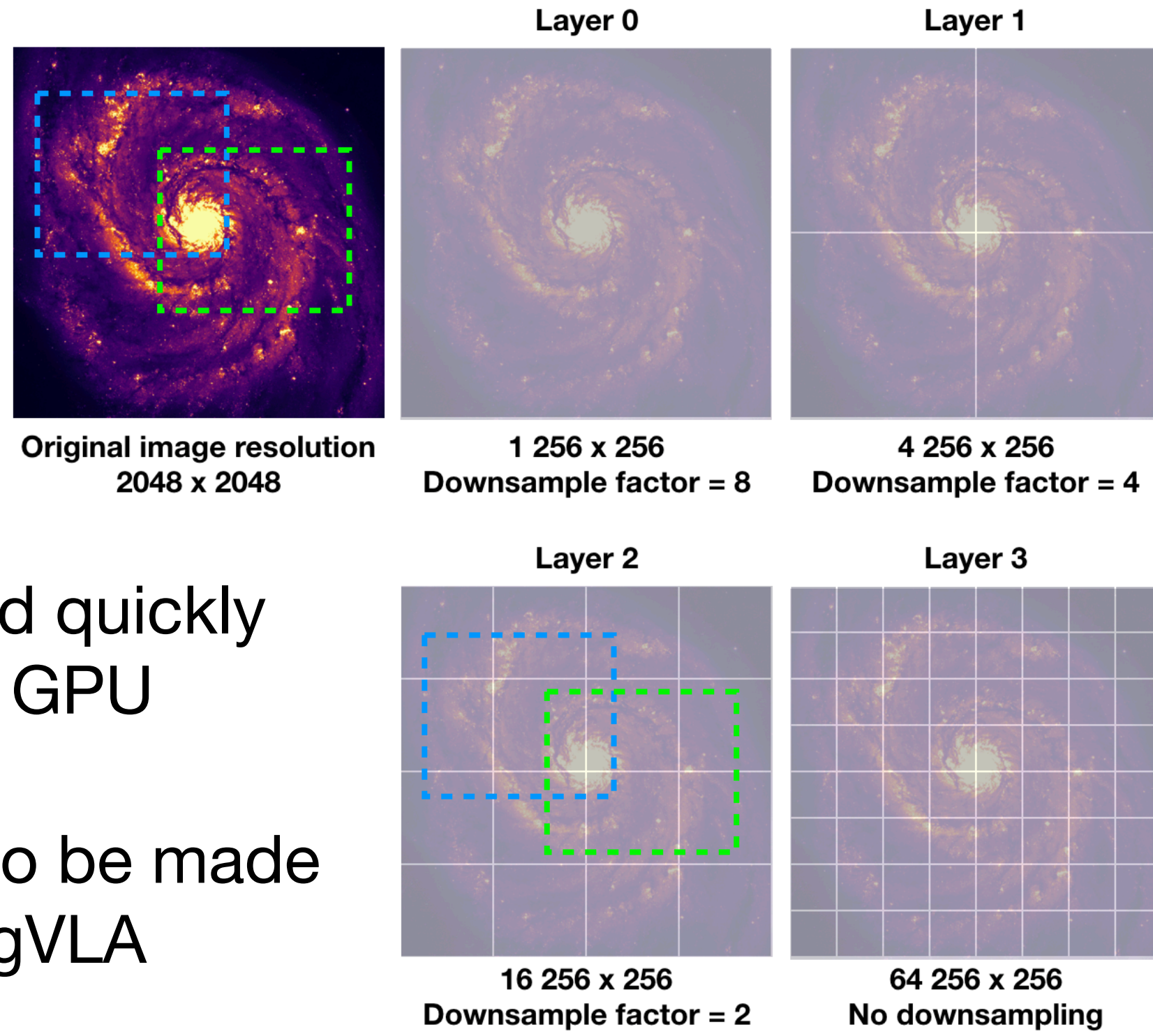


High Performance

Client-Server Architecture

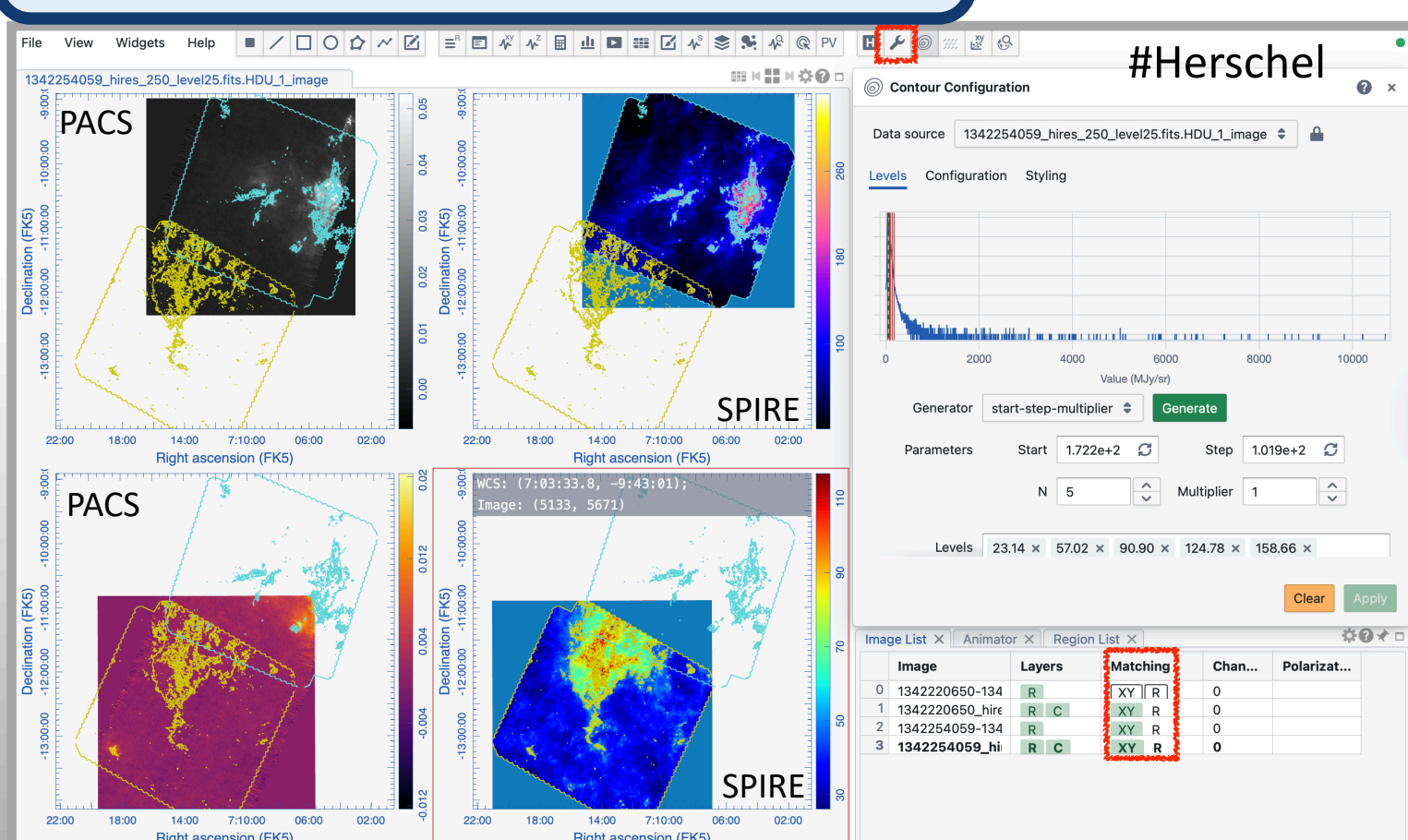


- ❖ Able to handle TB-sized cubes where only an image slice is cached at a time
- ❖ Applying latency-hiding techniques: downsampling, compression, and caching
- ❖ Large catalogs can be loaded quickly and rendered efficiently with GPU acceleration
- ❖ Performance enhancement to be made for ALMA-WSU, SKA, and ngVLA

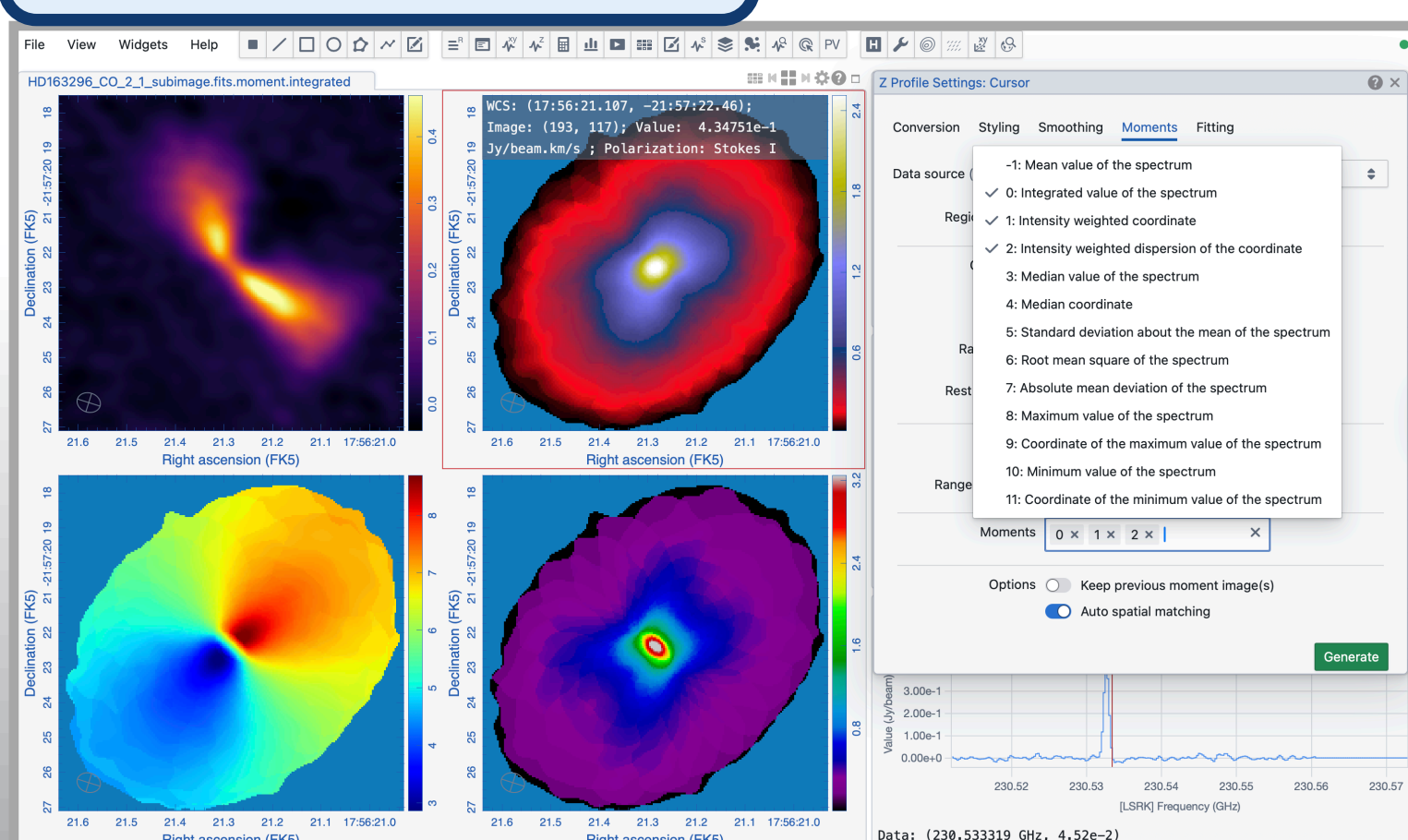


Efficient Analysis Tools

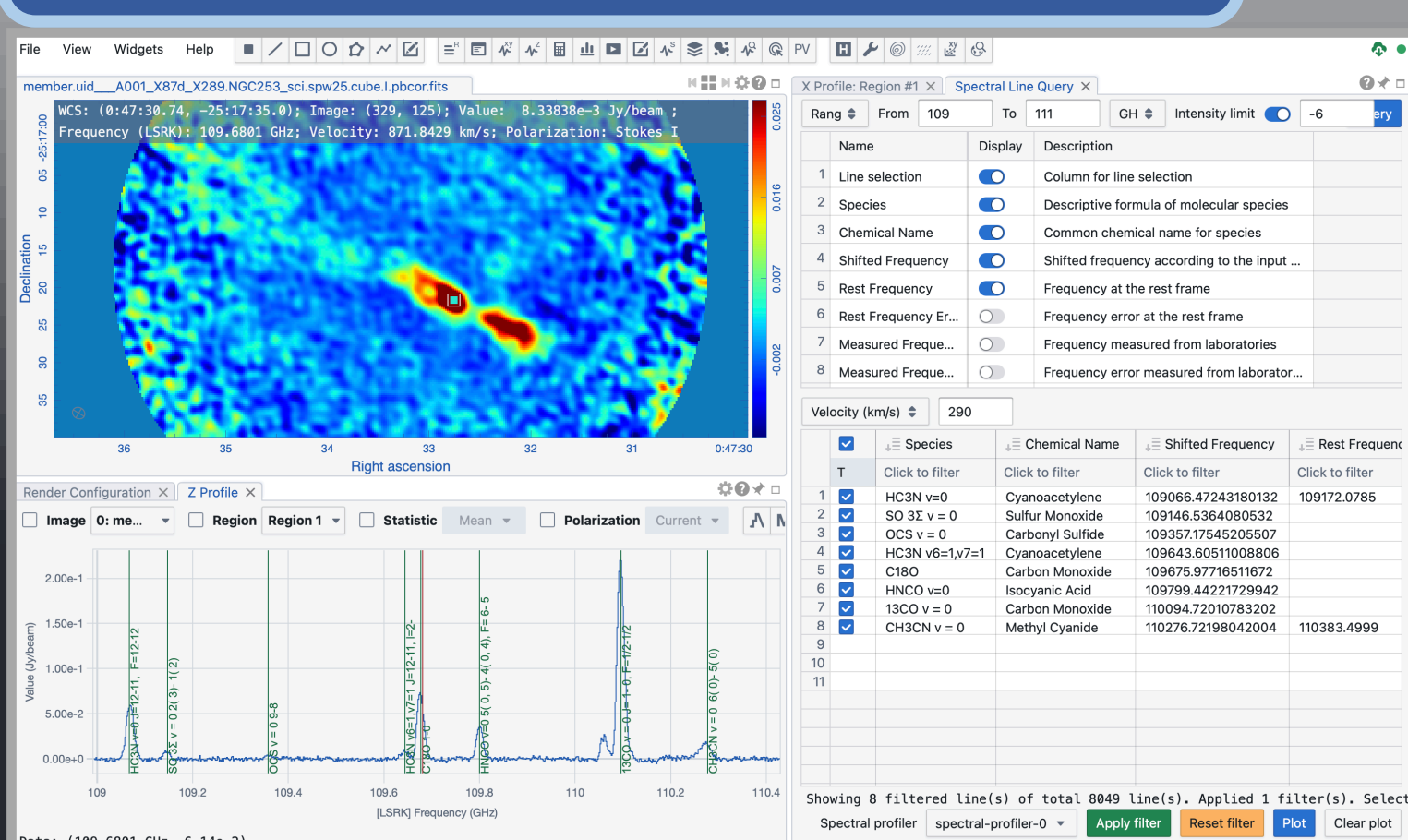
Matching & Contours



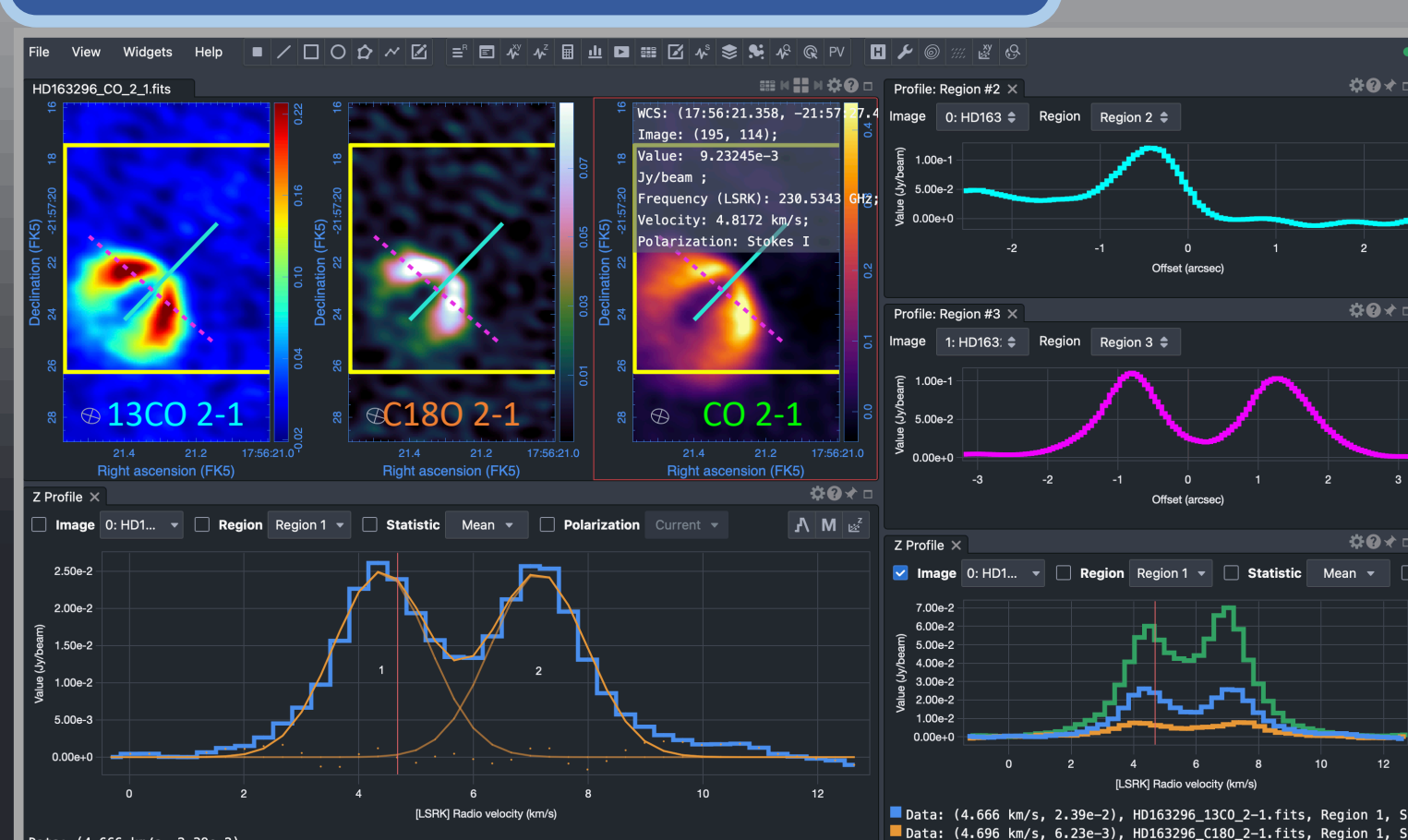
Moment Maps



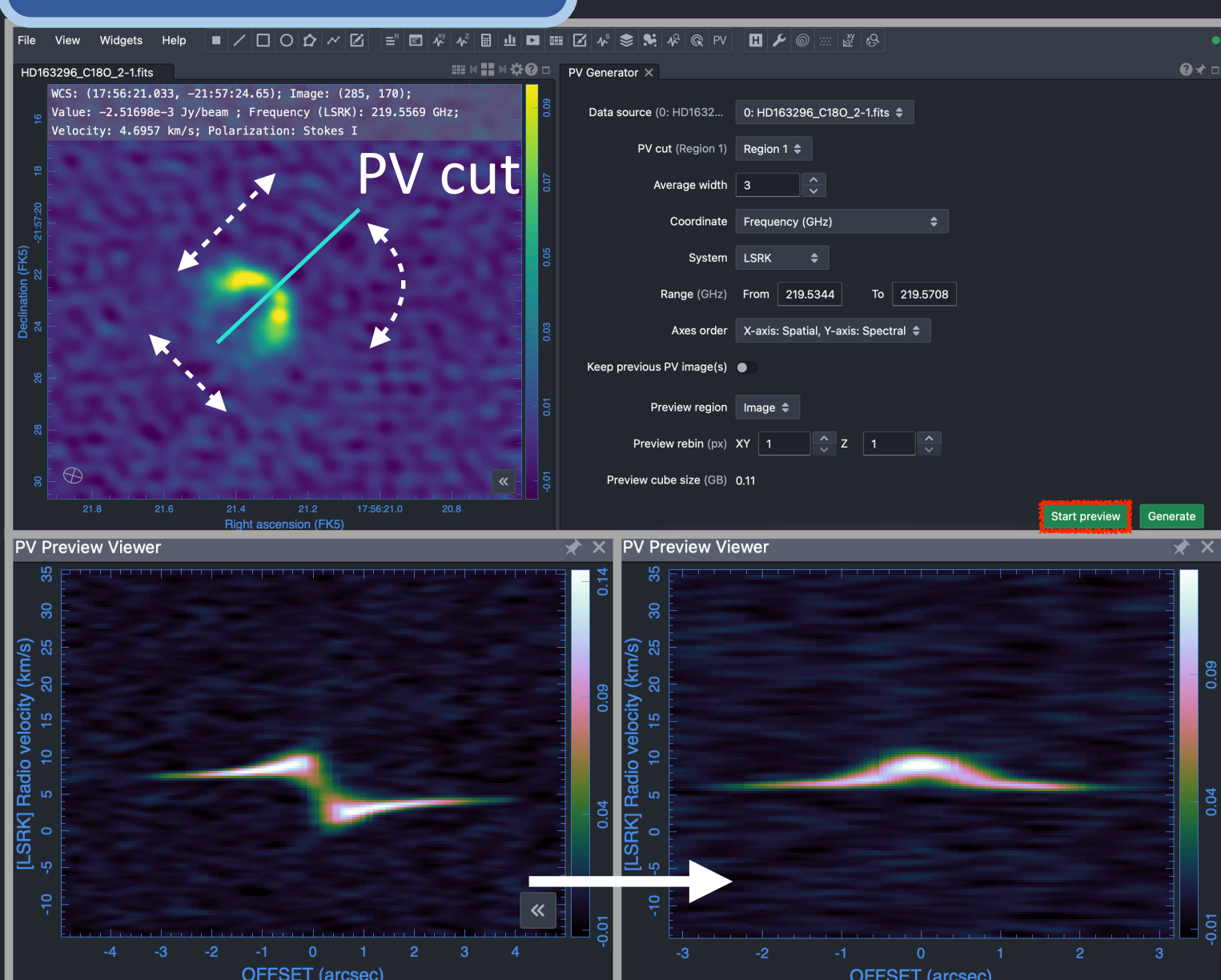
Spectral profile & Line query



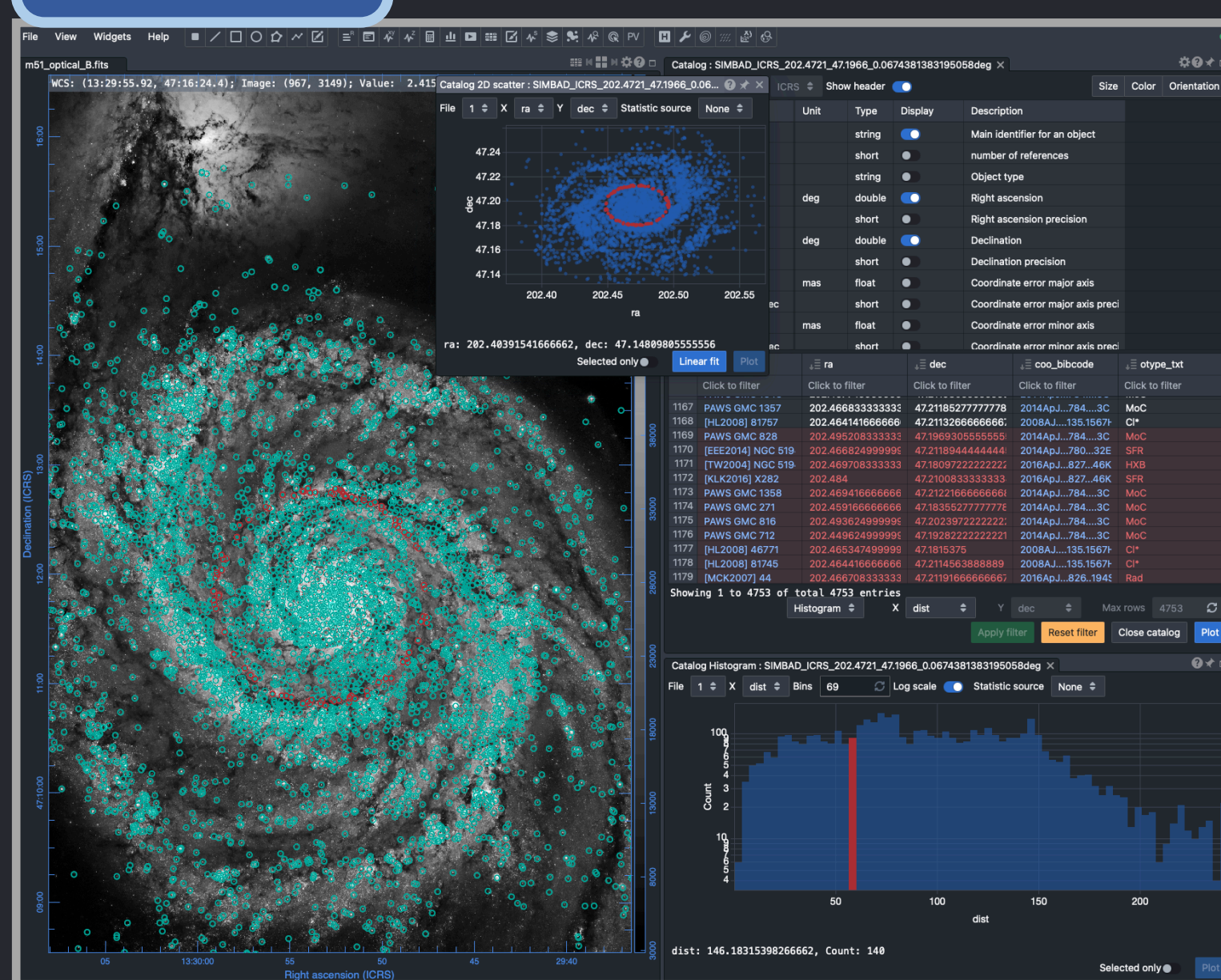
Profiles & Profile fitting



Interactive PV



Catalog



Deployment Flexibility

Stand-Alone Application

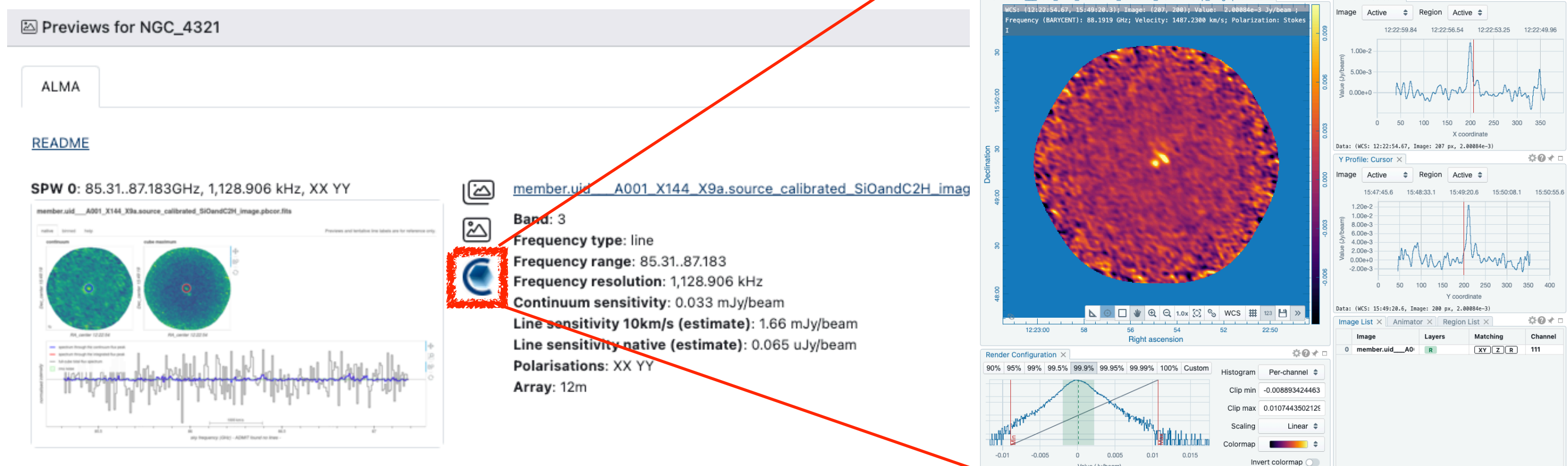
- ❖ Supports: macOS 13 14 15, Ubuntu 22.04 24.04, RHEL 8 9, Docker

Site Deployment (CARTA Controller)

- ❖ Institution-wide deployment
- ❖ Manages process lifetime and user authentication

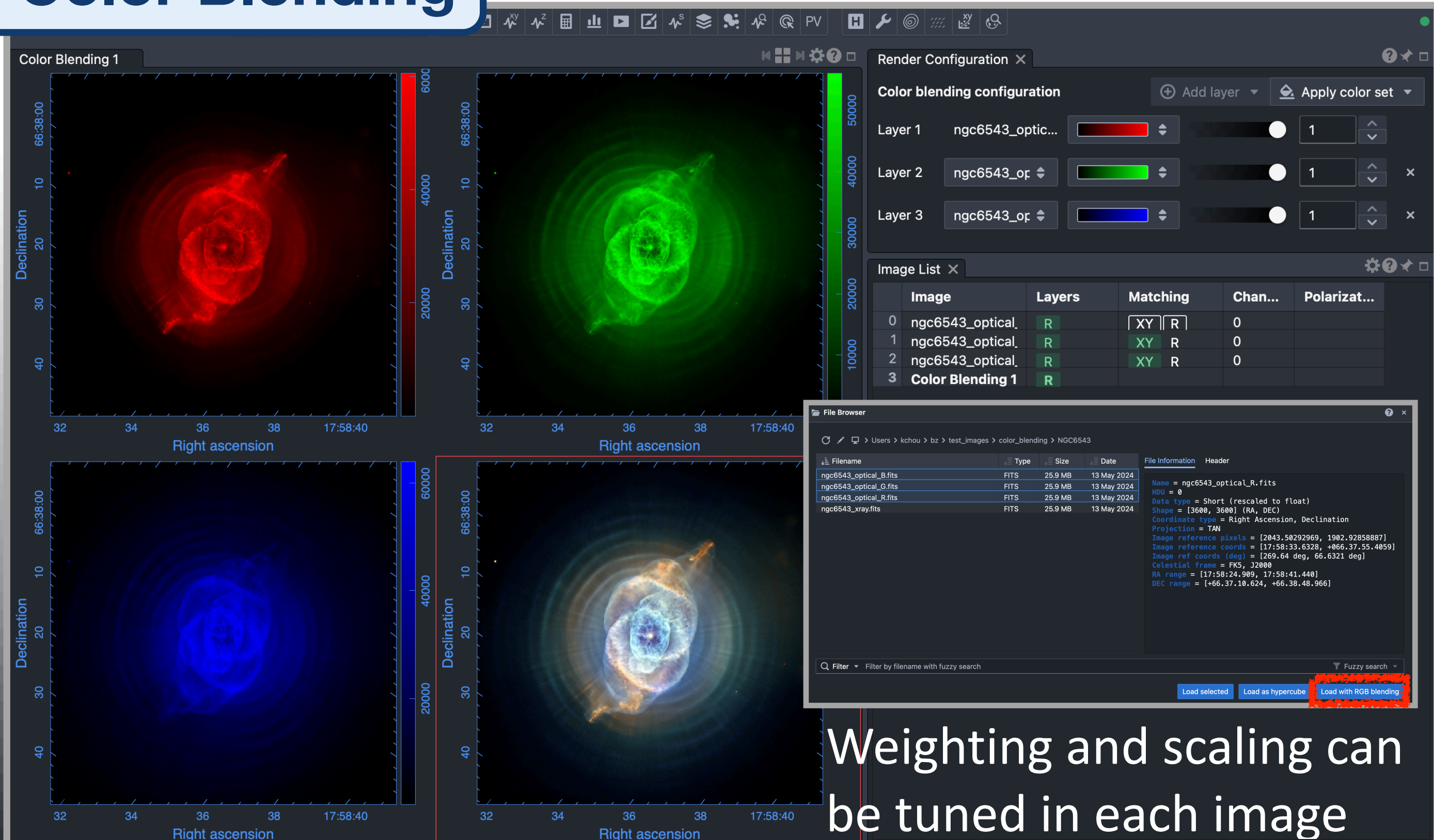
Integration with Science Archives

- ❖ ALMA, CASDA, NRAO archives
- ❖ Online previews before download



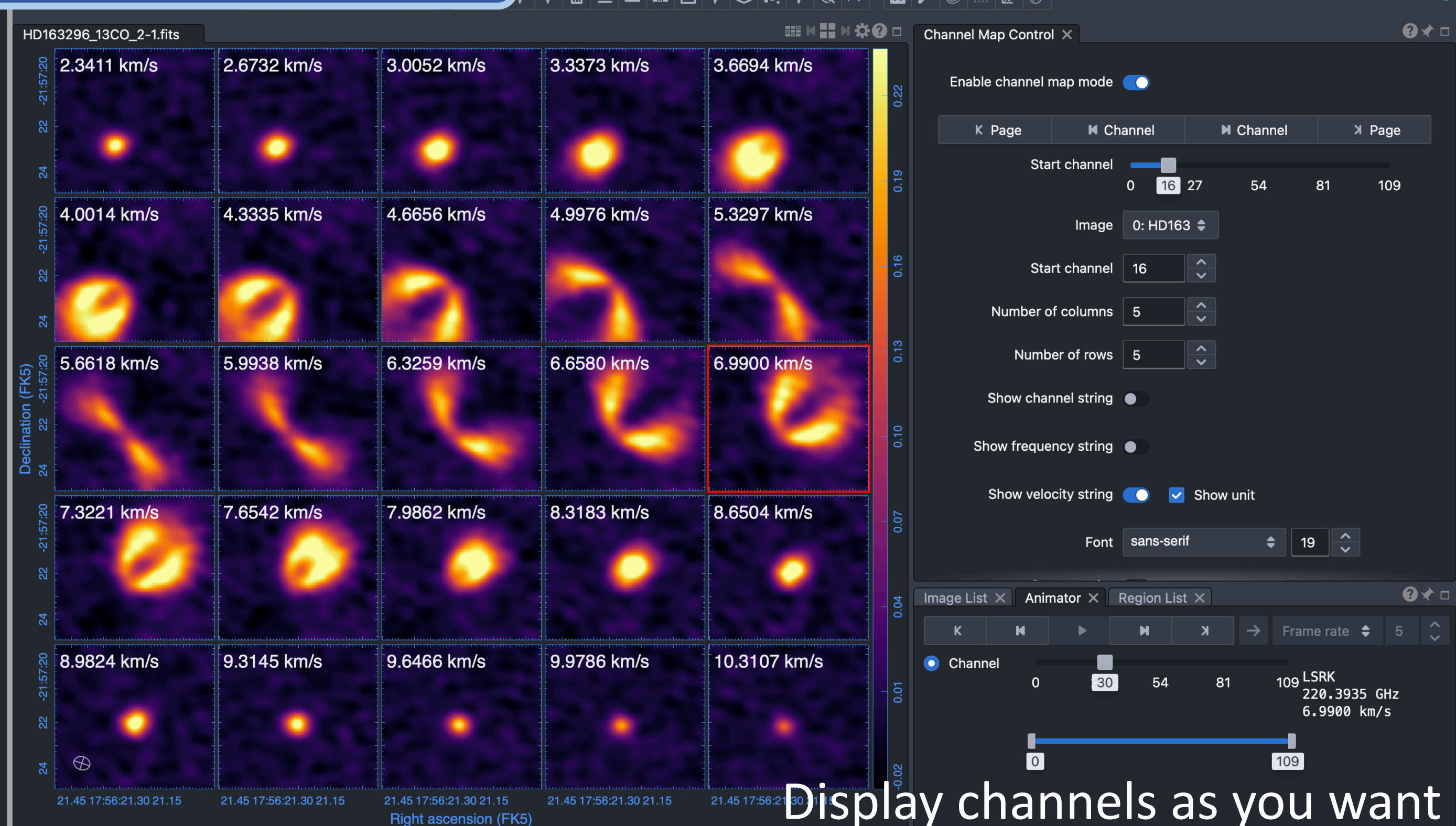
New in CARTA v5

Color Blending



Weighting and scaling can be tuned in each image

Channel Map



Display channels as you want